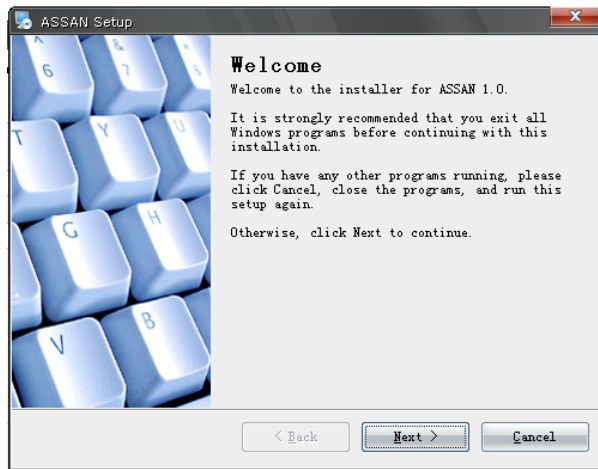
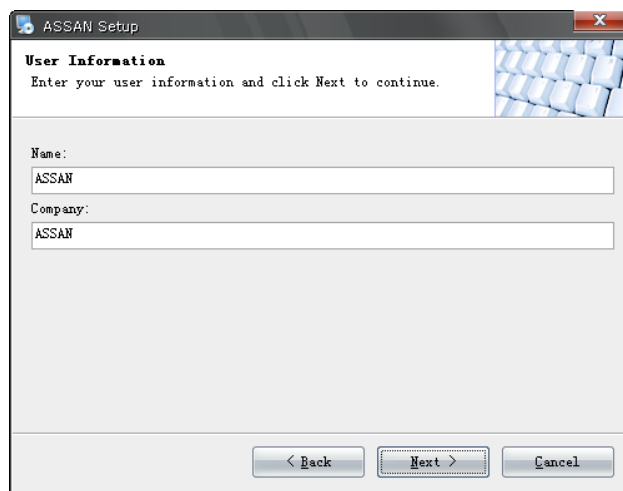


Instruction Manual for the Software of ASSAN V2 Series Receiver

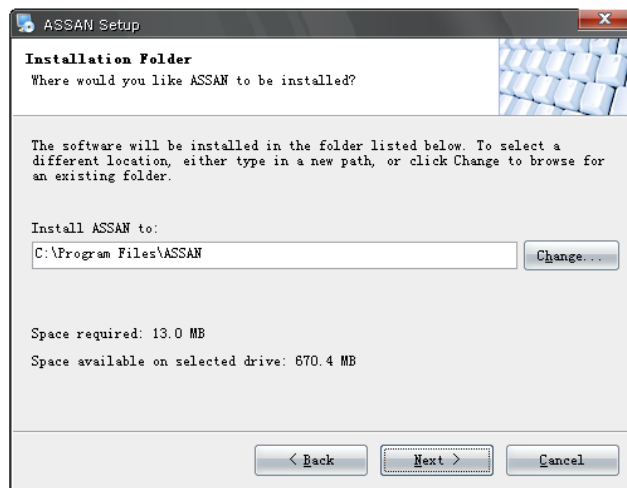
I. Setup



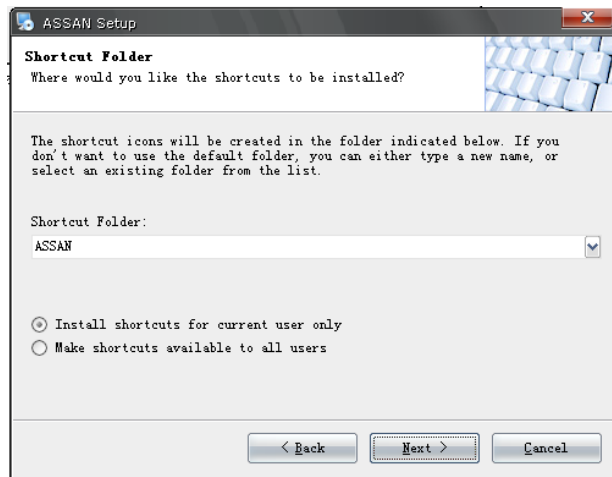
1. Double click SETUP to enter the welcome interface and click Next.



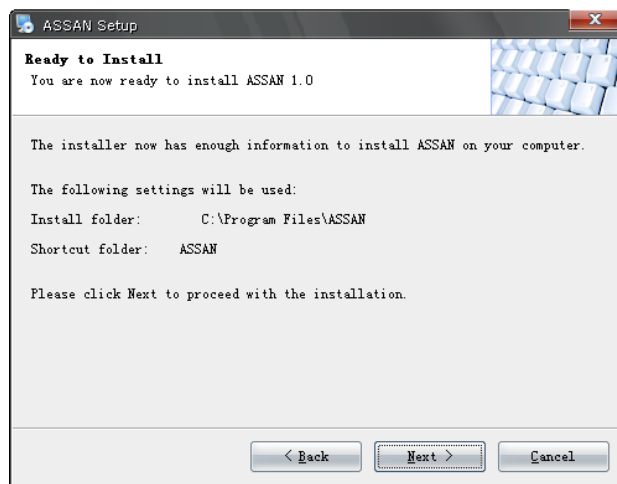
2. Enter your name and company name and click Next.



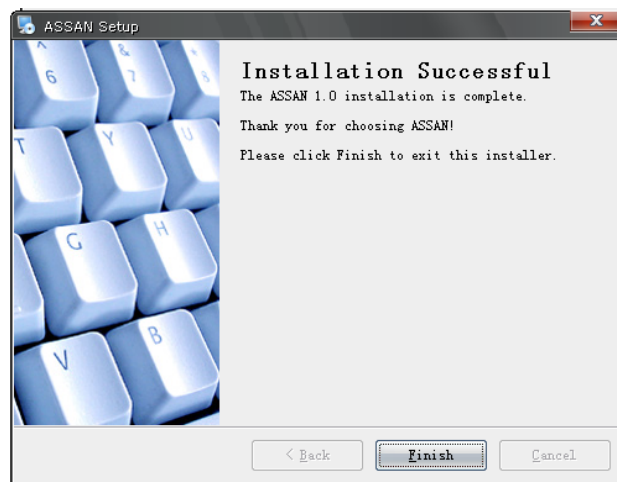
3. Select the path of installation and click Next.



4. Select whether to install the shortcuts in the Start menu and click Next.



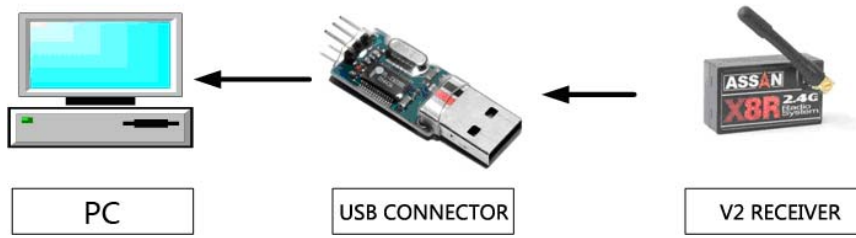
5. Confirm that the information is all right and click Next to start installation.



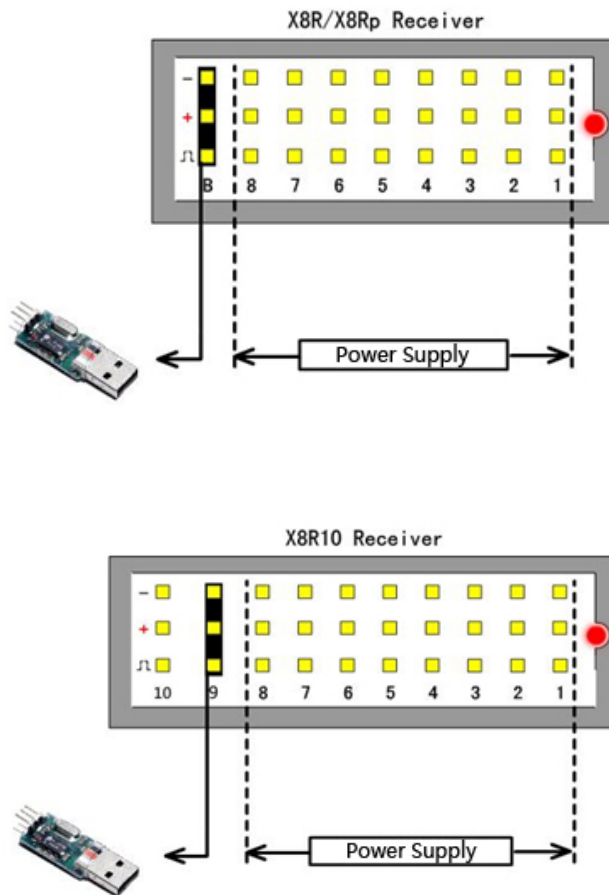
6. Click Finish when the installation is completed.

II. Connection of hardware

1. Insert the USB connector into your PC, and then connect the V2 receiver and the USB connector by extension signal cord. Please refer to the picture below.

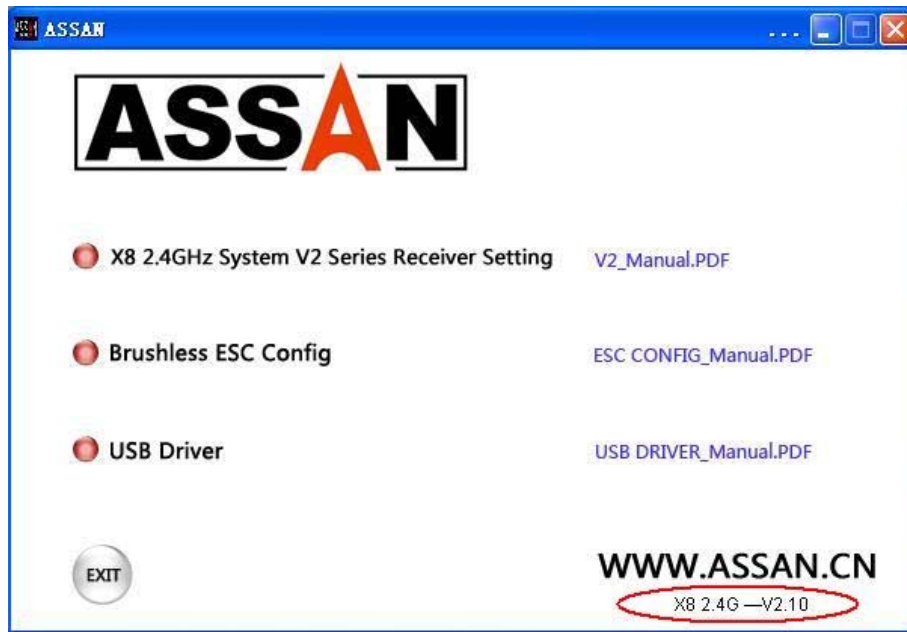


2. Connect the 3P extension signal cord of the V2 receiver to Channel B (X8R/X8Rp) or Channel 9 (X8R10) of the receiver, while connect the power supply to each of the channels from 1 to 8.




3. After the connection is finished, start up your PC and then turn on the power of the receiver.






4. Run the software. If the version number is displayed at the bottom-right of the interface, the connection is successful. You can use all the setting functions of V2 system.



III. Usage


1. Double click **ASSAN** icon on the desktop to start up the software system.
2. The system consists of 4 applications:
 - X8 2.4GHz System V2 Series Receiver Setting**
 - Brushless ESC Config**
 - USB Driver**
 - X8 2.4GHz System V2 Series Receiver Setting
 - Brushless ESC Config (please refer to other instructions for the usage of this application)
 - USB Driver
3. If it is the first time to use this system, please click **USB Driver** to install the USB driver.

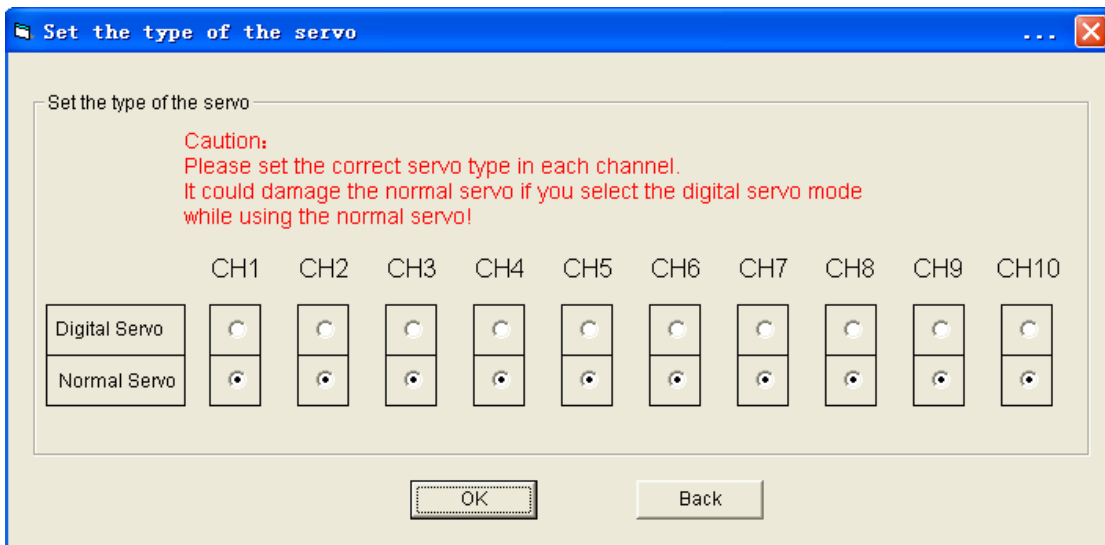
4. Click  **X8 2.4GHz System V2 Series Receiver Setting** to enter the setting of V2 series receiver, which includes:

-  **Servo's Type**
-  **Set the output power of your RF module**
-  **Fail Safe Setting**
-  **Return Default**
-  **Backward**

Important:

After all the functions of V2 receiver are properly set, click OK to save the setting. It is necessary to perform the binding operation for the X8 RF module once again to make all the settings effective.

1.  **Servo's Type** - - Select the type of servo




Select the channel to be set, and then select the mode of servo between Digital and Normal according to the type of servo connected. The digital servo has higher precision and speed than the normal one.

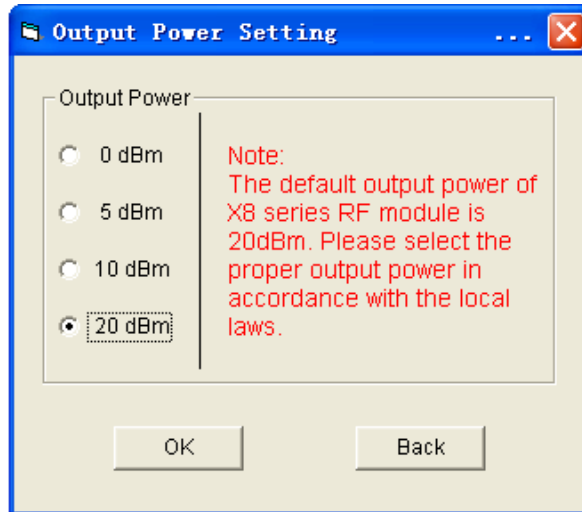


The digital servo is in the upper row while the normal servo is in the lower.

Click OK to save and the setting is finished.

Caution : It could damage the normal servo if you select the digital servo mode while using the normal servo!

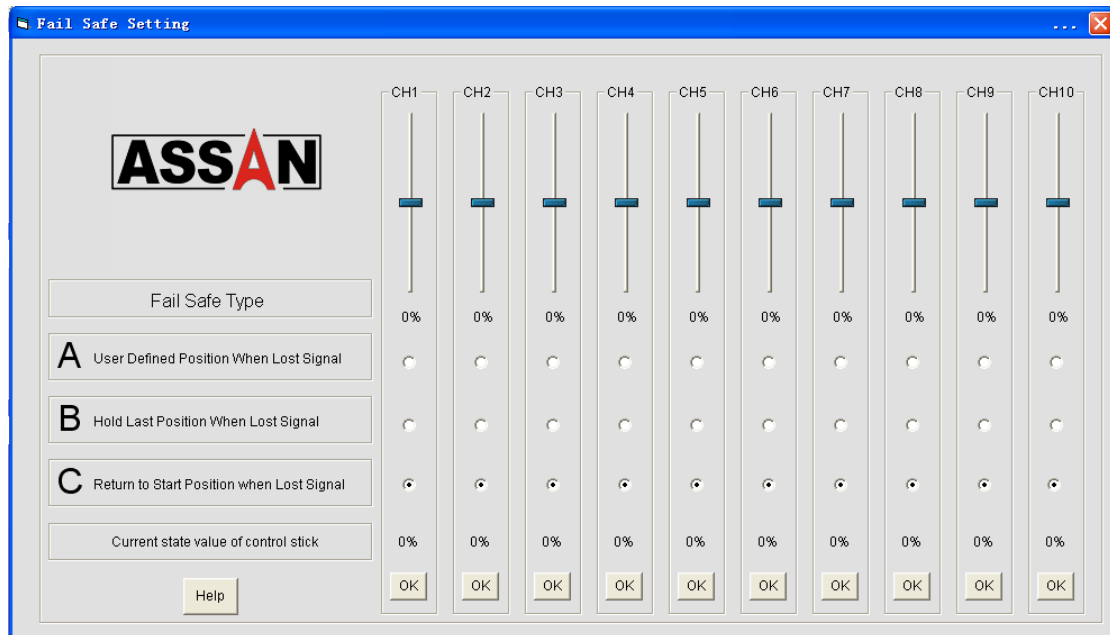
2.  **Set the output power of your RF module** - - Set the output power of your RF module



The default output power of X8 series RF module is 20dBm. Please select the proper output power in accordance with the local laws.

Select the proper output power, click OK to save. Setting finished.

3. Fail Safe Setting - - Set the protection mode for signal loss



- a. V2 system has 3 different protection modes selectable when the signal is lost:
 - A. Set the value of servo by the scroll bar from 0 to 100%. Once the signal is lost, the servo will automatically move to the position set by the user.
 - B. When the signal is lost, the servo will hold the last working position.
 - C. When the signal is lost, the servo will hold its working position at startup.
(Default setting)
- b. You can select any of the three protection modes for each channel. Different protection modes can be selected for different channels.
- c. After setting, click OK to finish. The channel that has been saved turns grey. In need of reset, please click Cancel, and then repeat the operation above.
- d. When the transmitter is power on, the "Current state value of control stick" will be real-time displayed.

4. Return Default - - return all the settings of V2 receiver to the default setting

5. Backward - - Back to the upper menu.